

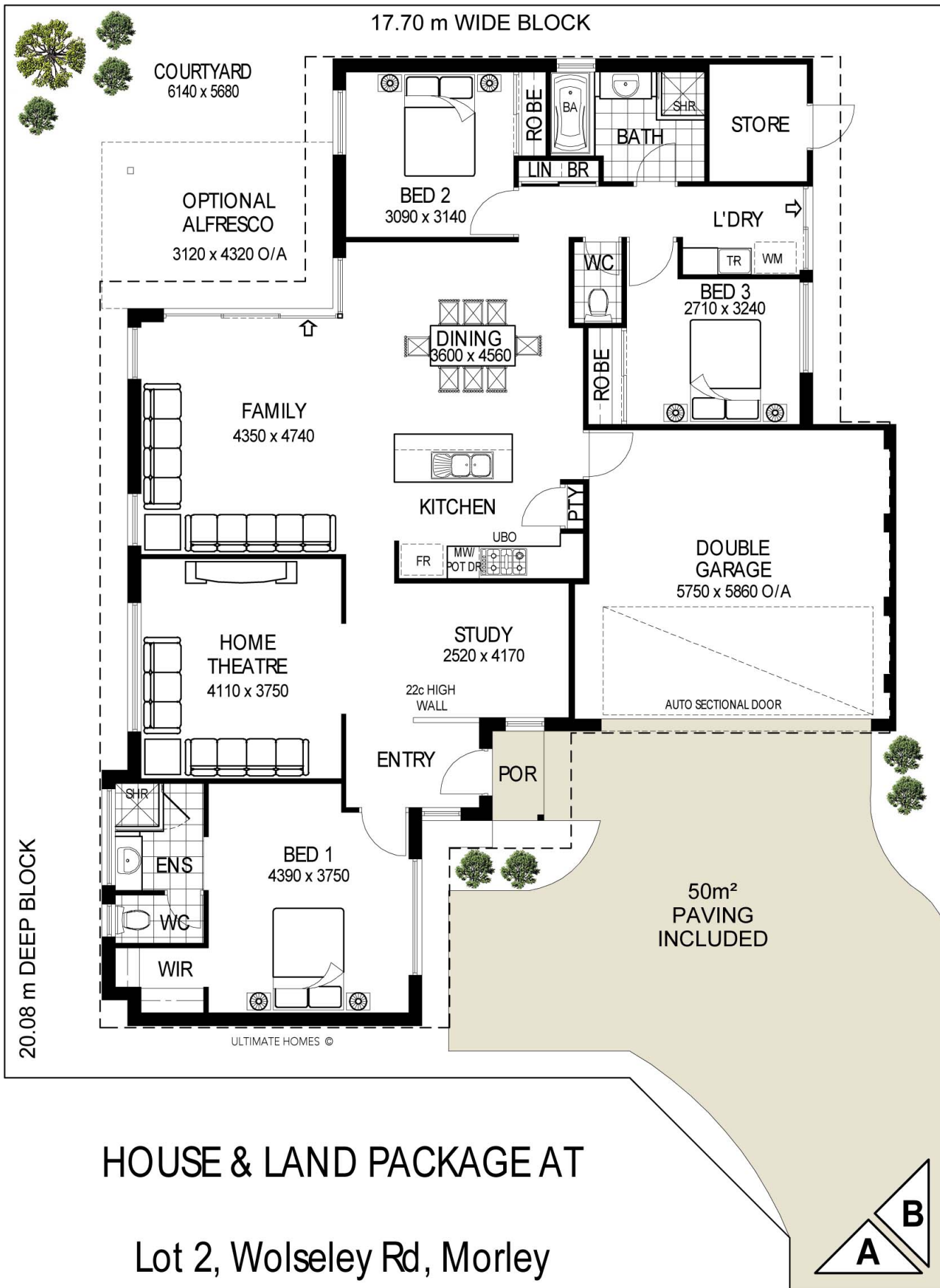
# HOUSE AND LAND PACKAGES AVAILABLE

## THE GEORDIE BAY 3

Colleen Pearce from Realmark can assist you with purchasing the land.

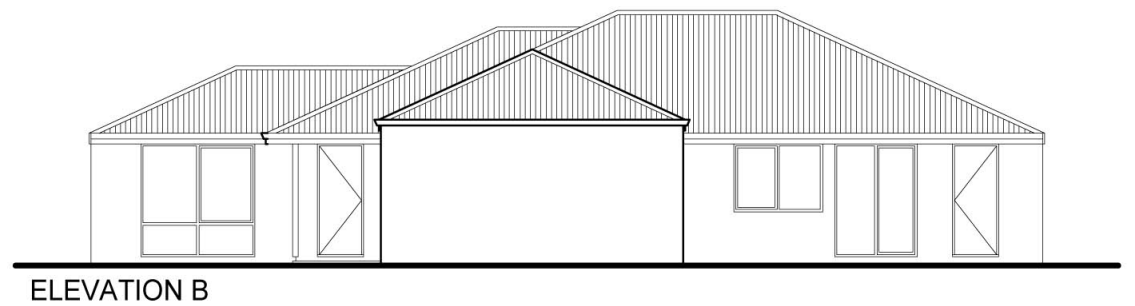
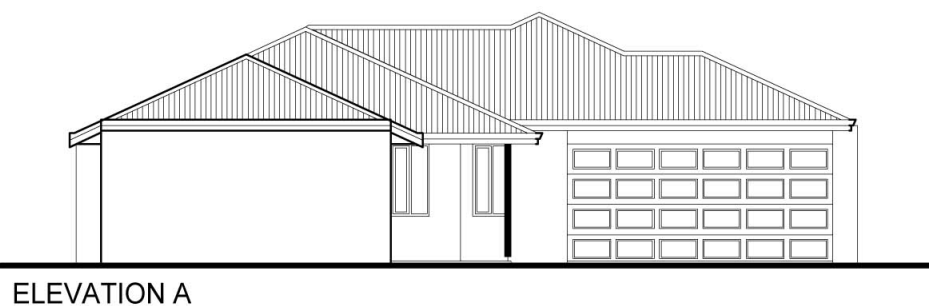
Ian Meyer from SmartaStrata can assist you with tailoring a House and Land Package which suits your Lifestyle. You can choose the illustrated Home, and modify it if necessary, choose another of our plans, or allow us to design a Home especially for you. Single and Double Storey plans available. Please note that you are under no obligation to build with SmartaStrata when purchasing the land.

Please contact either of us for more details.



AREA	
HOUSE :	149.42m <sup>2</sup>
GARAGE :	33.34m <sup>2</sup>
PORCH :	1.61m <sup>2</sup>
STORE :	4.46m <sup>2</sup>
<b>TOTAL :</b>	<b>188.83m<sup>2</sup></b>
	(inc/optional alfresco: 202.41m <sup>2</sup> )

HOUSE & LAND PACKAGE AT  
Lot 2, Wolseley Rd, Morley



© Copyright Ultimate Homes. All designs subject to council approval.

**Colleen Pearce**  
mobile: 0403 849 600

email: [cpearce@realmark.com.au](mailto:cpearce@realmark.com.au)



For more designs and information contact:

**Ian Meyer**  
1800 729 197  
0404 834 844

**smartastrata**  
SERIES  
www.smartrastrata.com.au